



Learning about Forests



A Programme of
Foundation for Environmental Education (FEE)





Rachel Boyle International LEAF Director





Foundation for Environmental Education

- ✓ Umbrella organisation
 - ✓ 4 member organisations in 4 countries in 1981
 - ✓ 84 member organisations in 73 countries in 2015

- ✓ Five Environmental Educational Programmes
 - ✓ Blue Flag
 - ✓ Green Key
 - ✓ Learning about Forests
 - ✓ Eco-Schools
 - ✓ Young Reporters for the Environment





FEE International Institutional Partners



UNEP

United Nations Environment Programme



UNWTO

United Nations World Tourism Organization



UNESCO & ICESCO

United Nations Educational, Scientific
and Cultural Organization



Learning about Forests





Learning about Forests Programme

- 1999 - LEAF began as a cooperation between FEE and existing 'Forest in Schools' programmes in Norway, Sweden & Finland
- International Steering Committee (ISC) includes representatives from FEE and the founding countries
- 2000 – officially rolled out
- 2015 - 23 countries worldwide



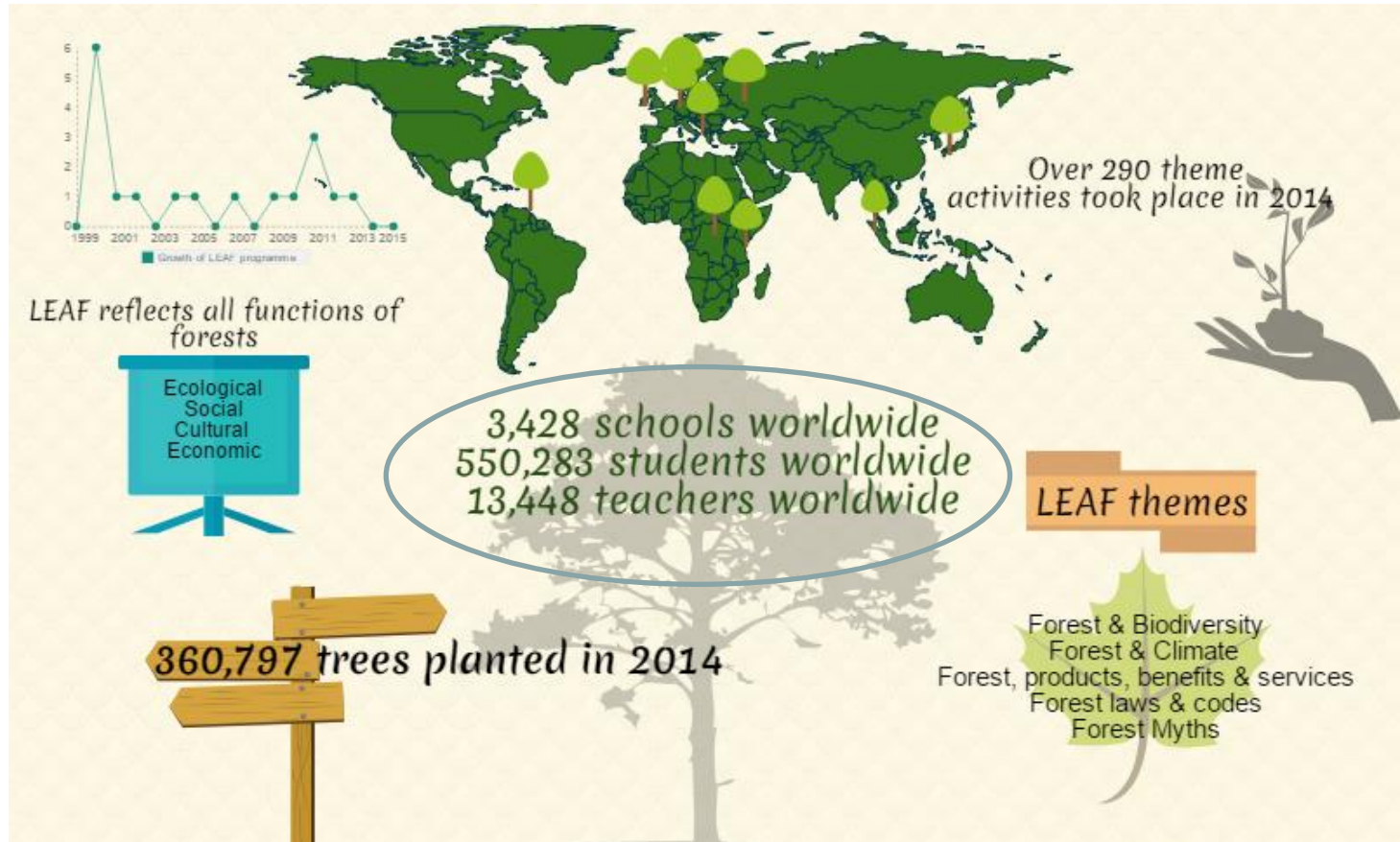


2015 celebrating 15 years





LEAF Figures





Interest from other countries is growing





The LEAF Programme

Aims

1. Increase level of awareness & knowledge about the key role forests play for sustainable life on our planet
2. Stimulate activities that help students achieve an increased level of environmental maturity irrespective of age & previous knowledge.





The LEAF programme

Objectives

- ✓ Ensure students learn to enjoy the outdoors, experience and observe nature
- ✓ Ensure students understand the ecological web
- ✓ Ensure students understand the interplay of man and nature
- ✓ Ensure students are capable of making decisions on environmental issues
- ✓ Ensure students help take responsibility for their future.





Sustainable Development Goals & LEAF

The key Sustainable Development Goals linked to the Learning About Forests Programme are:

Number 4: Ensure inclusive **QUALITY EDUCATION** and promote lifelong learning opportunities for all.

Number 6: CLEAN WATER & SANITATION.....protect and restore water-related ecosystems, including mountains, forests, wetlands, rivers, aquifers and lakes.

Number 15: Protect **LIFE ON LAND**

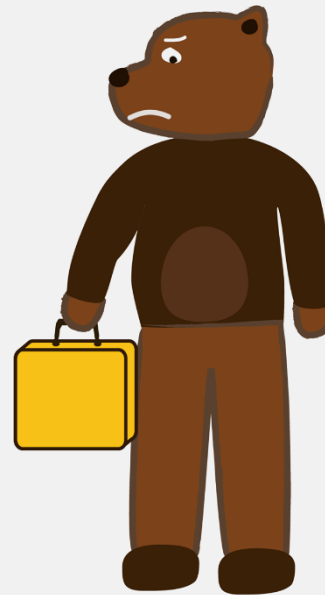




Sustainable Development Goal 15 & LEAF

Did you know that...?

80% of all
terrestrial plants
& animals
live in
forests



That's why the Global Goals seek
to protect forests and biodiversity



The LEAF Programme

- The LEAF Programme reflects all the functions of forests :



Ecological



Economic

ASPECTS



Social

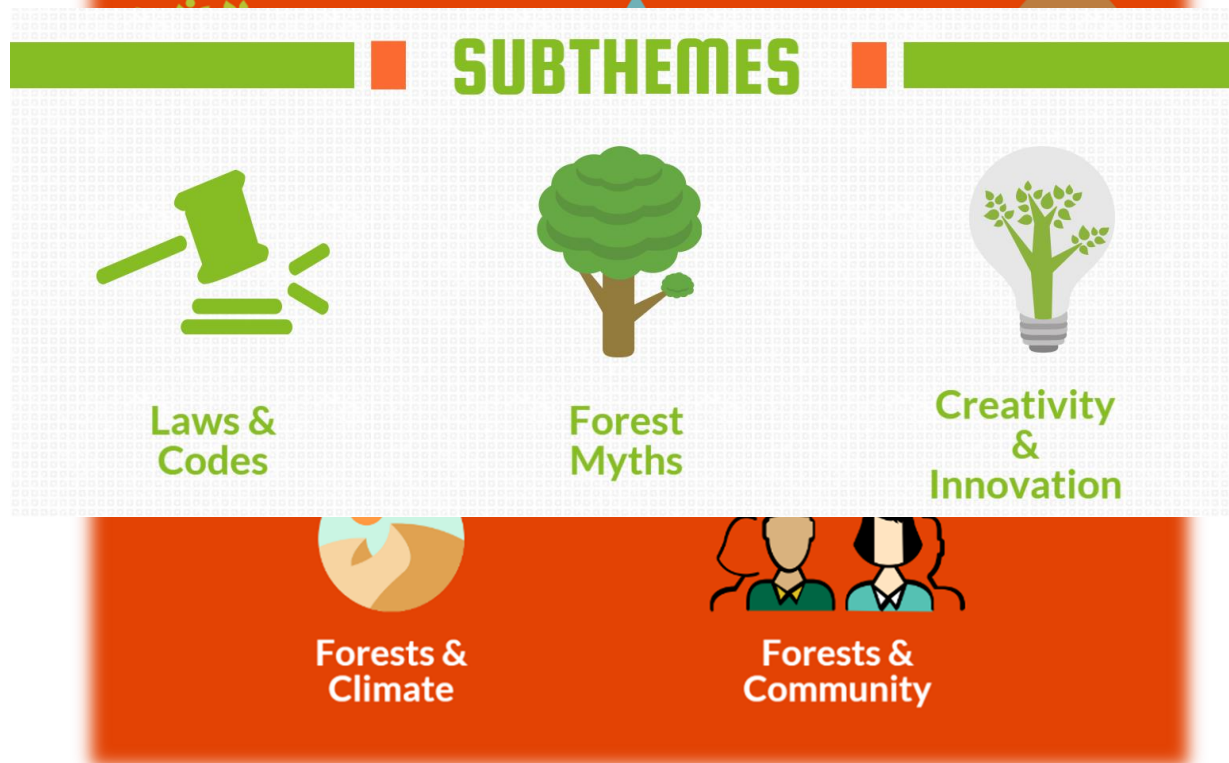


Cultural



The LEAF Themes

- ✓ Five overarching LEAF Themes
- ✓ New approved themes added as subthemes





LEARNING
ABOUT
FORESTS

THE FOREST CYCLE OF LEARNING ABOUT FORESTS

For a school to be considered for the prestigious award they must fulfill the following criteria:

SET UP A FOREST COMMITTEE

The Forest Committee aims to direct and address all phases of the LEAF programme

FOREST CODE

Decide on a common code for the forest and let others know about it

RESEARCH

Schools conduct Awareness Survey to assess the levels of awareness in relation to forests & chosen LEAF Theme

ACTION PLAN

Implement actions that help raise awareness about forests & chosen Theme. Stimulate activities that help reach the Goals & Objectives of LEAF

INFORM AND INVOLVE

Spread the LEAF message throughout the whole school and the wider community

CHECK AND REPORT PROGRESS

To show increased levels of awareness & changes in behaviour



FOUNDATION FOR
ENVIRONMENTAL EDUCATION
FEE



LEAF increasing knowledge & Creating Positive Change



Sharing positive stories!

- ✓ LEAF newsletter
- ✓ Facebook
- ✓ Twitter
- ✓ Flickr



SHARE YOUR STORY





LEAF International



Case study from Romania

Activity 1: Planting



Activities

Activity 2: Paintings



Activities

Activity 3: Informing & Involving the wider community about the importance of forests





Activities

Activity 4: Experiencing Nature



Activities

Activity 5: Artwork using materials from nature – learning about *'forest products'*





Thank you for listening!

Rachel Boyle

International LEAF Director
FEE International Head Office
Scandiagade 13
2450 Copenhagen SV
Denmark



Tele: +456124 8083

Email: rachel@feeinternational.org

Web: www.leaf.global.org

